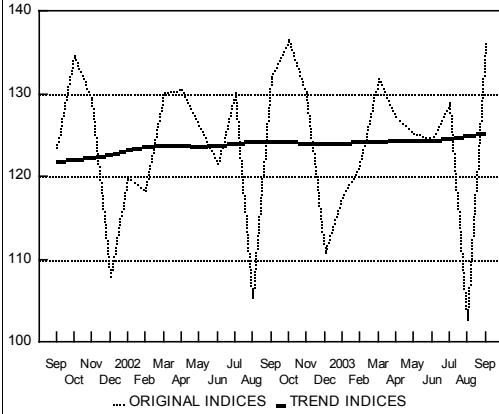


# Graphs

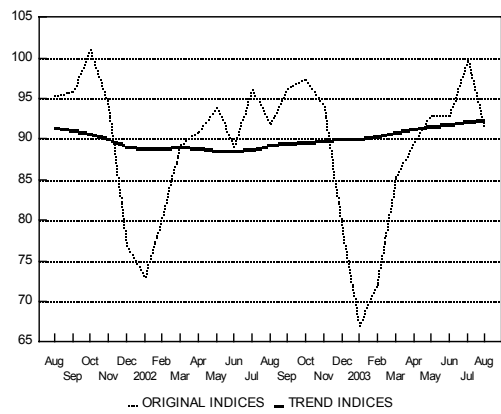
## INDUSTRY

indices: average 1992=100; trend indices by the TRAMO-SEATS method



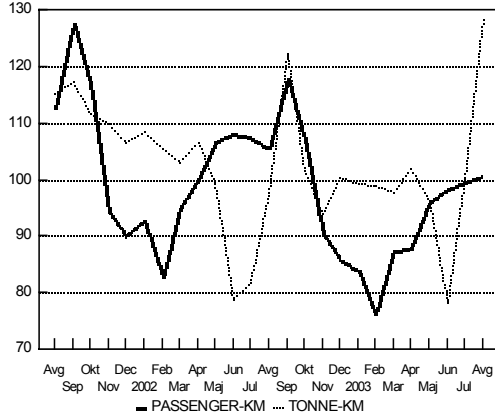
## CONSTRUCTION: WORKING HOURS

indices: average 1992=100; trend indices by the TRAMO-SEATS method



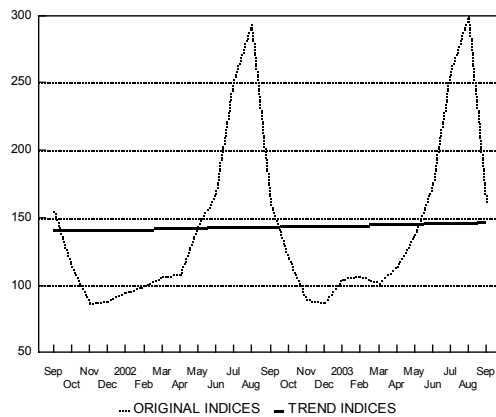
## TRANSPORT OF PASSENGER AND GOODS

indices: average 2002 = 100



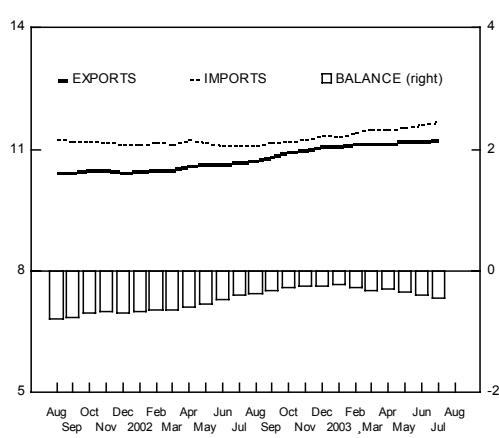
## OVERNIGHT STAYS TOTAL

indices: average 1992=100; trend indices by the TRAMO-SEATS method

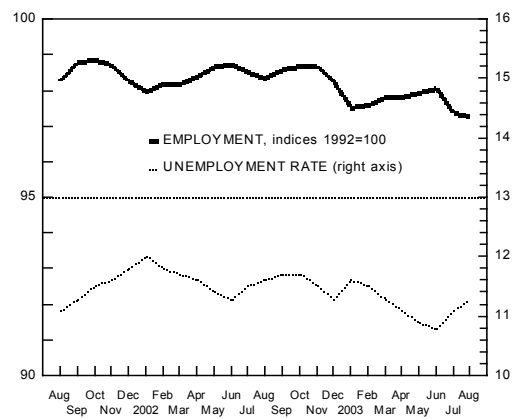


## GOODS TRADE FOB, EXCL. INTERCURRENCY CHANGES

12-month cummulatives in EUR, bn



## EMPLOYMENT AND UNEMPLOYMENT



# Graphs

