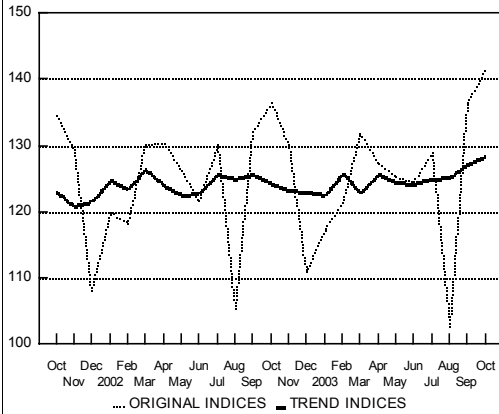


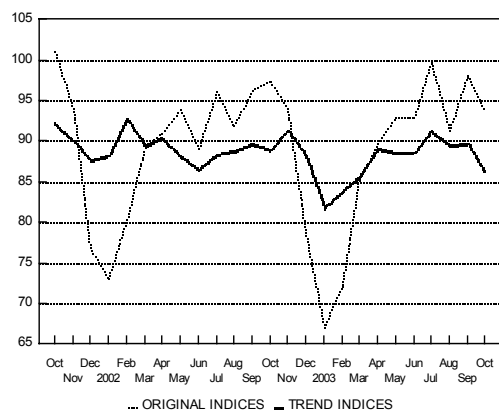
INDUSTRY

indices: average 1992=100; trend indices by the TRAMO-SEATS method



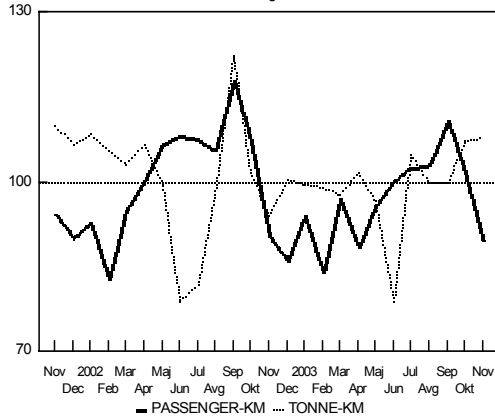
CONSTRUCTION: WORKING HOURS

indices: average 1992=100; trend indices by the TRAMO-SEATS method



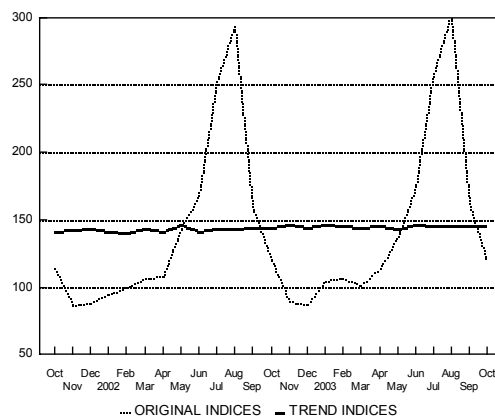
TRANSPORT OF PASSENGER AND GOODS

indices: average 2002 = 100



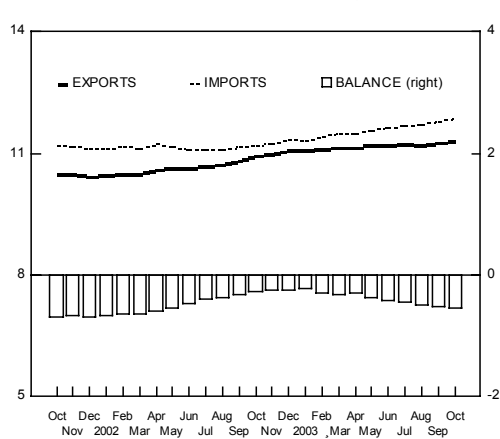
OVERNIGHT STAYS TOTAL

indices: average 1992=100; trend indices by the TRAMO-SEATS method

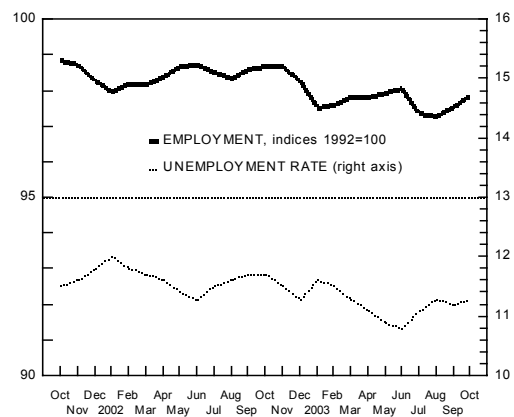


GOODS TRADE FOB, EXCL. INTERCURRENCY CHANGES

12-month cummulatives in EUR, bn



EMPLOYMENT AND UNEMPLOYMENT



Graphs

